

### NPS Series-Gel Battery for Deep-cycle Service

NPS Series Deep-Cycle Gel batteries are maintenance free and require no watering, while providing you the unmatched quality and power of Toasan advanced deep Cycle gel technology.



### Features:

- The success of NPS batteries comes from the internationally superior Gel technology.
- Excellent energy storage capacity combined with high reliability.
- Designed in accordance with IEC 60254-1 700 Cycles at 75%DOD.
- 7 years design life at 20 °C ambient temperature (80% remaining capacity from C20).
- Grid plate construction consisting of a lead calcium alloy.
- Very low gassing due to the internal gas recombination.
- High cycle service life.
- Better temperature resistance performance.
- Excellent deep cycle performance.
- Superior low current discharge performance.
- Better charge acceptability.
- Better safety performance and reliability.
- High Performance price ratio and low yearly operating cost.
- Non-Spillable construction design.
- Safety valve installation makes it explosion proof.
- Low self discharge characteristic.
- ABS containers and covers (UL94HB, UL94V-0 optional) .
- Gel-batteries are designed to be operated within a wide temperature range -40° C and +55° C.
- Maintenance-free (no topping up) motive power batteries in gel technology.
- Completely recyclable.

### Benefits

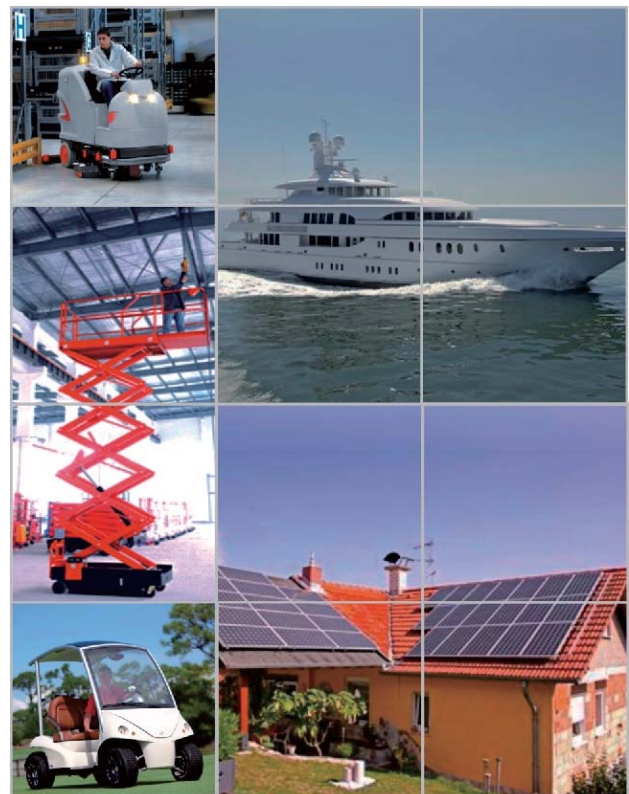
- Long-lasting runtime and battery life in the most demanding of applications.
- Proprietary Gel formulation prevents stratification.
- Superior engineering offers exceptional durability.
- Sealed containers ensure safe use in schools, hospitals, office buildings and other health & safety-sensitive (HSE) environments.

### Charging

|   | Charge Voltage  | Charging Current     |
|---|-----------------|----------------------|
| Float Voltage                           | 2.30VPC         | 10 to 35 A per 100Ah |
| Voltage on boost charge stage           | 2.35VPC-2.45VPC |                      |
| Max. switch - mode voltage              | 2.45VPC         |                      |
| Equalizing charge voltage (max. values) | 2.45VPC         |                      |

### Applications

- Aerial Work Platform (AWP)/Access
- Material Handling
- Floor Machine
- Recreational Vehicle (RV)
- Industrial
- Electric Boats
- Golf/Utility/Neighborhood Electric Vehicle (NEV)
- Wheelchairs
- Remote Monitoring & Instrumentation
- Renewable Energy (Solar, Small Wind and Small Hydro)



## NPS Series-Technical Specification

| Type      | Nom         | Rated Capacity | Length | Width | Height | Total height | Approx. weight | Terminal Type |
|-----------|-------------|----------------|--------|-------|--------|--------------|----------------|---------------|
|           | voltage (V) |                |        |       |        |              |                |               |
| NPS210-6  | 6           | 210            | 260    | 180   | 247    | 252          | 29.6           | T5            |
| NPS225-6  | 6           | 225            | 243    | 187   | 275    | 275          | 30.5           | T5            |
| NPS250-6  | 6           | 250            | 260    | 187   | 265    | 272          | 34.7           | T5            |
| NPS310-6  | 6           | 310            | 295    | 178   | 354    | 360          | 46.2           | T5            |
| NPS330-6  | 6           | 180            | 295    | 178   | 354    | 360          | 46.8           | T5            |
| NPS380-6  | 6           | 380            | 295    | 178   | 404    | 410          | 55.5           | T5            |
| NPS420-12 | 6           | 420            | 295    | 178   | 404    | 410          | 57             | T5            |
| NPS35-12  | 12          | 35             | 196    | 130   | 155    | 167          | 10.8           | T3            |
| NPS40-12  | 12          | 40             | 198    | 166   | 174    | 174          | 14.3           | T3            |
| NPS55-12  | 12          | 55             | 229    | 138   | 208    | 212          | 16.1           | T3            |
| NPS70-12  | 12          | 70             | 350    | 167   | 178    | 178          | 23.5           | T3            |
| NPS75-12  | 12          | 75             | 260    | 169   | 211    | 215          | 25.1           | T3            |
| NPS85-12  | 12          | 85             | 260    | 169   | 211    | 215          | 26.2           | T3            |
| NPS90-12  | 12          | 90             | 306    | 169   | 208    | 231          | 28.2           | T5            |
| NPS100-12 | 12          | 100            | 331    | 174   | 214    | 233          | 30.2           | T5            |
| NPS120-12 | 12          | 120            | 407    | 174   | 210    | 233          | 39.5           | T5            |
| NPS135-12 | 12          | 135            | 341    | 173   | 283    | 289          | 40.8           | T5            |
| NPS200-12 | 12          | 200            | 522    | 240   | 219    | 240          | 59.5           | T5            |
| NPS250-12 | 12          | 250            | 520    | 268   | 220    | 224          | 70             | T5            |
| NPS200-2  | 2           | 200            | 171    | 111   | 330    | 367          | 13             | T5            |
| NPS300-2  | 2           | 300            | 171    | 151   | 330    | 367          | 18.5           | T5            |
| NPS400-2  | 2           | 400            | 210    | 176   | 330    | 367          | 25.8           | T5            |
| NPS500-2  | 2           | 500            | 241    | 172   | 330    | 367          | 31.5           | T5            |
| NPS600-2  | 2           | 600            | 302    | 175   | 330    | 367          | 37.7           | T5            |
| NPS800-2  | 2           | 800            | 410    | 175   | 330    | 367          | 51.5           | T5            |
| NPS1000-2 | 2           | 1000           | 475    | 175   | 330    | 367          | 62             | T5            |
| NPS1500-2 | 2           | 1500           | 400    | 350   | 345    | 378          | 96.5           | T5            |
| NPS2000-2 | 2           | 2000           | 491    | 350   | 345    | 369          | 130            | T5            |
| NPS3000-2 | 2           | 3000           | 710    | 350   | 345    | 369          | 190            | T5            |